

Home To Roost

Fabrics by
**Renée
Nanneman**



Quilt designed by Jean Ann Wright
Quilt size: 67³/₄" x 78³/₄"



makower uk[®]

1384 Broadway • New York, NY 10018
(800) 223-5678 • www.andoverfabrics.com

Home to Roost Quilt

Introducing Andover Fabrics new collection: Home to Roost by Renee Nanneman

Quilt designed by Jean Ann Wright

Elegant birds and softly muted floral prints combine in a pleasing way in this peaceful quilt. An easy method of strip piecing makes the construction of the pieced columns a cinch. The quilt is ideal for a bed topper or couch throw. Some piecing experience is helpful when it comes to piecing the sawtooth patchwork border.

Quilt finishes 67¾" x 78¾"

Fabric Requirements

		Yardage	Rose	Brown
Fabric A*	sashes	2 yards	4910-L	4910-N
Fabric B**	border 1, bricks	2½ yards	4911-R	4911-N
Fabric C	border 3	1½ yards	4912-N	4912-G
Fabric D	border 2, bricks	½ yard	4913-E	4913-E
Fabric E	bricks	¼ yard	4916-V	4913-V
Fabric F	bricks	¼ yard	4914-R	4915-E
Fabric G	bricks	¼ yard	4915-N	4917-O
Fabric H	border 2, bricks	⅝ yard	4914-L	4915-L
Fabric I	bricks	¼ yard	4913-L	4916-N
Fabric J	bricks	¼ yard	4917-L	4917-N
*Fabric A	backing	5 yards	4910-L	4910-N

**includes binding

Cutting Directions

Note: Sashes and border 1 measurements are the exact lengths required plus ¼" seam allowances. Mitered border 3 measurements include 2" extra length plus seam allowances. WOF designates the width of fabric from selvedge to selvedge (approximately 42" wide).

Fabric A Cut (5) sashes 6½" x 62", fussy cut lengthwise to center bird motifs.

Fabric B Cut (2) side borders 3" x 62", cut lengthwise.
Cut (2) top/bottom borders 2¾" x 55½", cut lengthwise.
Cut (6) strips 2½" x 40" for brick background, cut lengthwise.
Cut (8) strips 2½" x 28" for brick background, cut lengthwise.
Cut (4) squares 4½" x 4½", cut in half diagonally once to make 8 half-square triangles for brick background.
Cut (8) strips 2½" x WOF for binding.

Fabric C Cut (8) strips 5½" x WOF, and piece to make the following:
2 side borders 5½" x 81¼" (see step 7).
2 top/bottom borders 5½" x 70¼".

Fabric D Cut (1) strip 5½" x 28" for bricks.
Cut (22) squares 4" x 4", cut in half diagonally twice to make 88 quarter-square triangles for border 2.

Fabric E Cut (1) strip 5½" x 28" for bricks.

Fabric F Cut (1) strip 5½" x 28" for bricks.

Fabric G Cut (1) strip 5½" x 28" for bricks.

Fabric H Cut (1) strip 5½" x 40" for bricks.
Cut (21) squares 4" x 4", cut in half diagonally twice to make 84 quarter-square triangles for border 2.
Cut (2) squares 3⅝" x 3⅝", cut in half diagonally once to make 4 half-square triangles for border 2 corners.

Fabric I Cut (1) strip 5½" x 40" for bricks.

Fabric J Cut (1) strip 5½" x 40" for bricks.

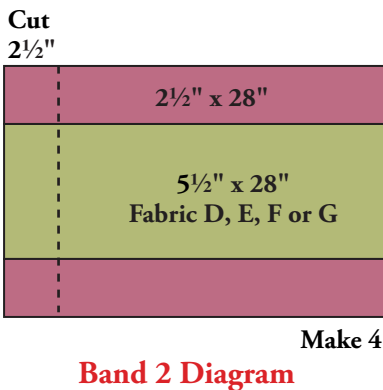
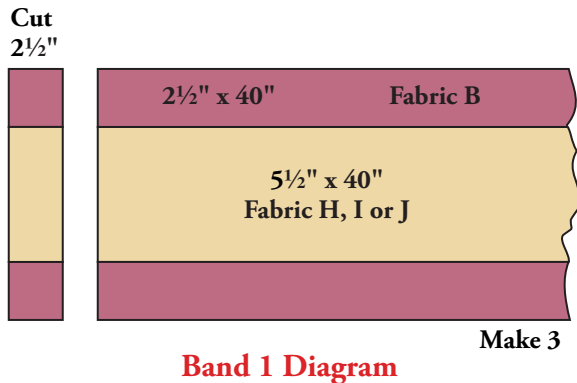
*Additional fabric required for backing.

Backing Cut (2) panels 38" x 87", pieced to fit quilt top with 4" overlap on all sides.

Sewing Accurate Seam Allowances

Accurate seam allowances are especially important in this quilt. Test that you are sewing a “scant” seam allowance—one that is a thread or two narrower than $\frac{1}{4}$ ". To test, sew three 1" x 3" strips together side by side. Press and measure. The unit should be 2" x 3". If it is not exactly 2" wide, readjust your sewing until it measures 2" perfectly.

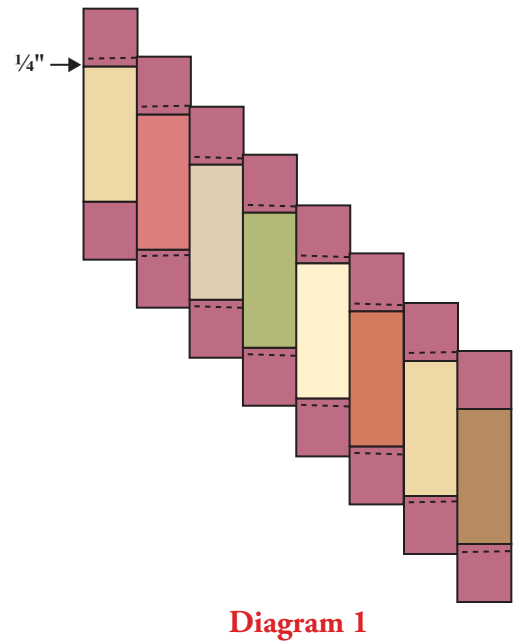
Take notice of where the edges of the strips are when you sew them accurately. Are they at the edge of the quarter-inch presser foot? Are they to the left of the foot's outer edge? You may want to place a strip of masking tape at the place where you get the most accurate seam allowance.



Making and Assembling the Quilt

- The 4 pieced columns that make up the center of the quilt are composed of “bricks” made with this simple strip-piecing method. Referring to the Band 1 Diagram, sew 40" long fabric B strips to long edges of the fabric H strip. Press seam allowances toward fabric B. The band should be a precise $9\frac{1}{2}$ " wide. Repeat this step with the I and J strips. Likewise, sew 28" long fabric B strips to edges of fabric D, E, F, and G strips to make 4 Band 2's. Press seams.
- From each Band 1, cut 14 or 15 segments each $2\frac{1}{2}$ " wide for a total of 44 bricks. From each Band 2, cut 10 segments for a total of 40 bricks.

Refer to the Quilt Diagram throughout the assembly. Sew 11 segments from Band 1 alternately with 10 segments from Band 2, arranging the segments as shown or as you wish. Step each segment down from the one to its left (Diagram 1). The top raw edge of the second segment should be $\frac{1}{4}$ " higher than the top seam of the first segment. Stitch segment 1 to segment 2. Repeat to make a pieced unit with a total of 21 segments. Make 4 pieced units, arranging the segments in a different order in each. Press all seam allowances in one direction.



Home to Roost Quilt

3. The pieced units are trimmed along their uneven edges to a width of $5\frac{1}{2}$ ". Hint: Use a gridded cutting mat and a rotary ruler that is at least 6" wide to make this step easier. Turn the pieced unit at an angle and align the outer fabric B points so they are parallel with a line of the cutting mat.

Position a rotary ruler so that the $\frac{1}{4}$ " line along the right edge is just to the outside of the ends of the colored bricks (shown with blue circles in Diagram 2b). Look at the left edge of the ruler. The $5\frac{1}{4}$ " line of the ruler (not $5\frac{1}{2}$ ") should align with the left ends of the colored bricks (shown with orange circles in Diagram 2a). It is important that adequate seam allowances remain along both edges of the pieced unit after trimming.

Trim at the edge of the ruler on the right side of the unit. Turn the piece around so the remaining jagged edge is on the right. Using a wide ruler, trim this side of the unit $5\frac{1}{2}$ " away from the first cut (Diagram 3). Repeat on all 4 pieced units. Sew a $4\frac{1}{2}$ " fabric B triangle at the top and bottom of each unit, matching the center of the triangle with the center of the top brick patch ("X" in Diagram 4). Use a square ruler to trim the ends, leaving a $\frac{1}{4}$ " seam allowance above the end of the top brick. The entire unit should measure $5\frac{1}{2}$ " wide and 62" long.

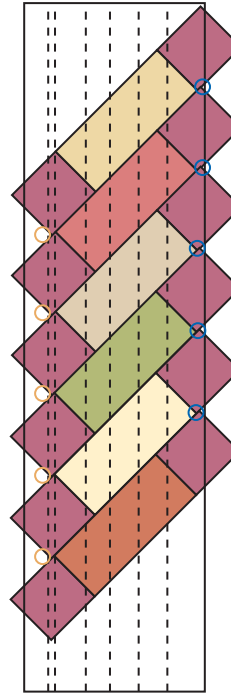


Diagram 2a

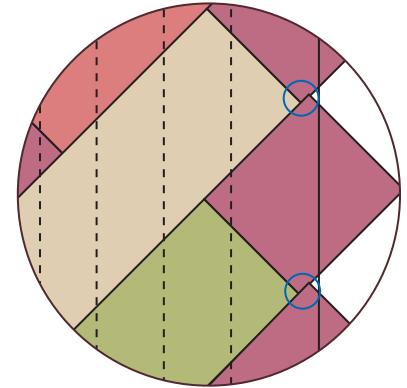


Diagram 2b

4. Join the 5 fabric A sashes and the 4 trimmed units to make the quilt center. Press the seam allowances toward the sashes.
5. Sew the long fabric B borders to the sides. Sew the shorter fabric B borders to the top and bottom. Note that these border strips are different widths to accommodate pieced border 2.
6. To make the pieced border, join 19 fabric H quarter-square triangles with 20 fabric D triangles. Sew to the top. Repeat for the bottom. Join 23 H triangles and 24 D triangles. Sew to the side. Repeat for the other side. Sew a fabric H $3\frac{5}{8}$ " triangle to each corner. Trim the corners if necessary with a square ruler.
7. Since the striped strips are cut crosswise, they must be joined to make the outer border. Here is an easy method to ensure that the stripe looks continuous and the joining seam almost disappears. Place one striped strip on top of another, with right sides together and the printed stripes aligned. Sew a seam exactly through the center of the rose bouquet stripe. (The serpentine motif stripe is too difficult to match.) Press the seam allowance open. Check to see that the stripes look continuous. If not, sew down the middle of the next rose stripe. Once you are satisfied, trim the excess seam allowance. Repeat for all 4 borders. Join strips as necessary to make each border longer than needed.

Match the center stripe of a side border with the middle of the quilt's edge. Pin from the middle to each end. The printed stripe should look the same at both ends. Sew the border to the quilt. Repeat on all sides. Miter the corners and trim the excess.

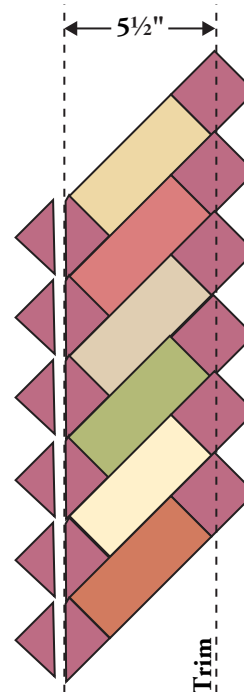


Diagram 3

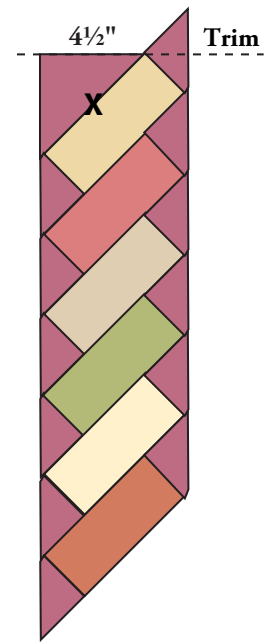
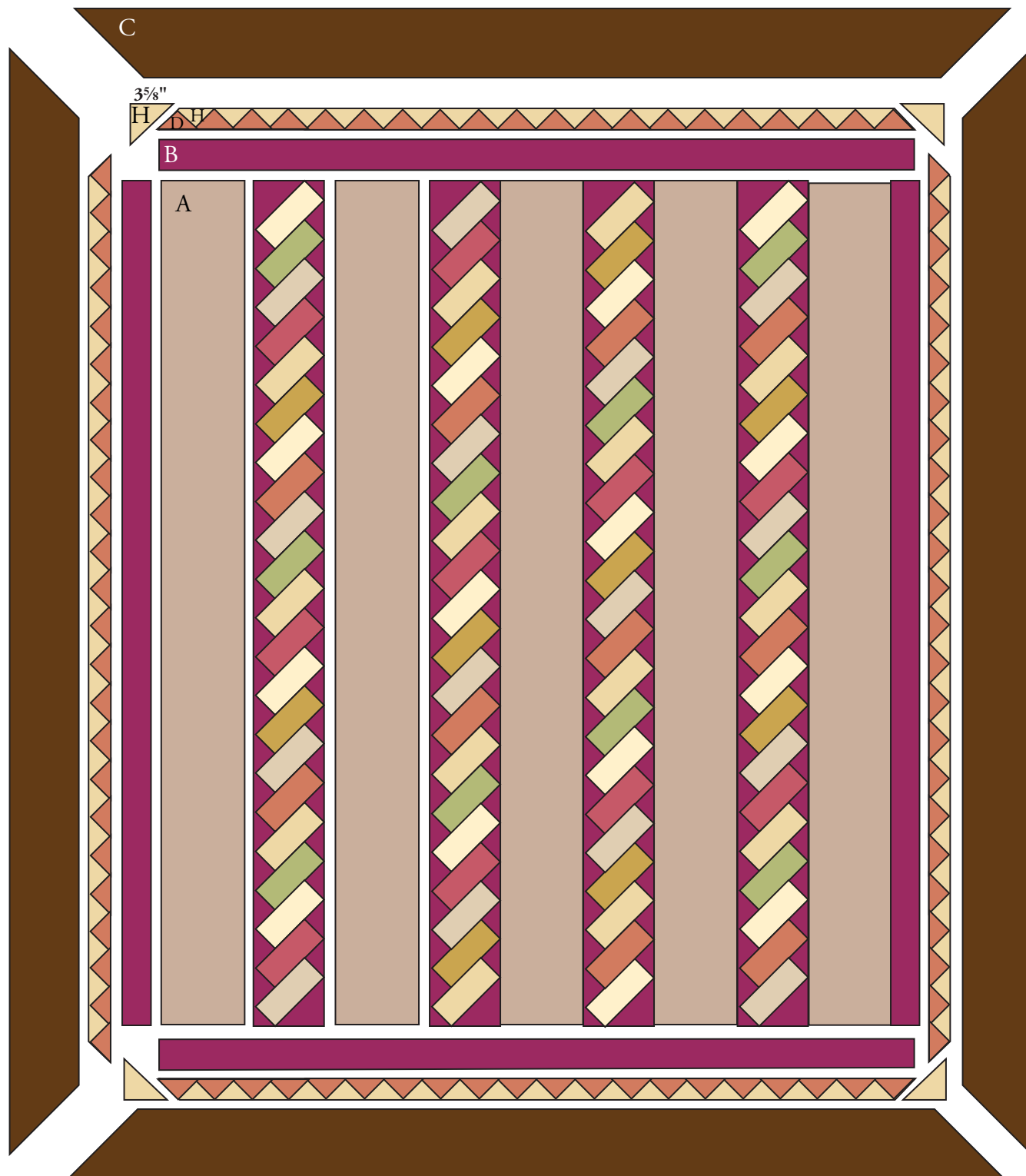


Diagram 4

Home to Roost Quilt

Finishing the Quilt

8. Layer quilt with batting and backing. Quilt in the ditch around borders and block patches. Quilt a motif of your choice in the wide sashes. Quilt lines parallel with the stripes in the outer border. Bind to finish the quilt.



Quilt Diagram

1384 Broadway
 New York, NY 10018
 (800) 223-5678
 www.andoverfabrics.com

Home to Roost

by Renée Nanneman



4910-L*



4911-R*



4912-N*



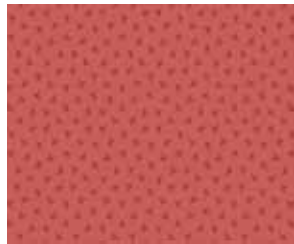
4913-L*



4913-E*



4914-L*



4914-R*



4915-N*



4916-V*



4917-L*



4910-E



4911-N



4912-G



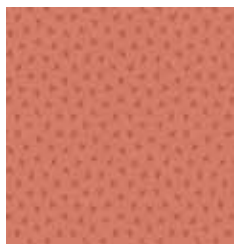
4913-V



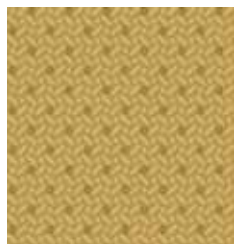
4913-O



4913-E



4914-E



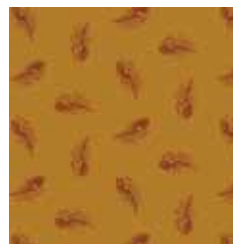
4915-L



4915-E



4916-N



4917-O



4917-N

*Indicates fabric used in the red quilt pattern. Fabrics shown are 25% of actual size.

Free Pattern Download Available at www.andoverfabrics.com